

	Stadsing A/S	Version 0
	Oestre Faelledvej 13 - 9400 Noeresundby	Revision A
	Replaces specification no. <i>n/a</i> From: <i>n/a</i> Due to: <i>n/a</i>	Date: 2021.05.26
		Page 1 of 2
Code: 27146	Article: clear EU630 cup PET 500/630ml (SET B)	UPC: 5907739664167
	Specification no. clear EU630 Ø95xH149,3	Food contact: cold beverages
Prepared by: UN		CE mark: Yes
Checked by: Dept. Super.	Production Supervisor: Dept. Super.	
Attachments:	Article drawing: EU630; Nr. Formy # 21730 (20.6)	

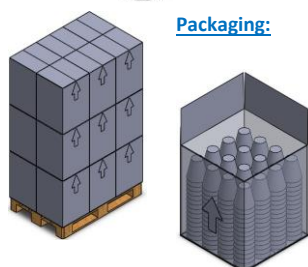
pic:



I. General arrangement

PACCOR Polska Sp. z o. o. will deliver the article **EU630 cup PET 500/630ml (SET B)** according to and within the limits of this article specification. Supplier food contact safety declaration will follow.

Basic article characteristics are outlined in the attached article drawing: "EU630". No modifications to the article characteristics listed below are allowed, unless agreed to by both parties and expressed in writing and signed/autographed. ID as per box no. and production date (label).

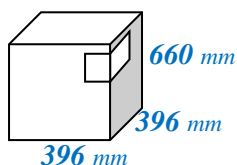


Packaging:

II. Raw material specification

Compounds	Basic composition	Alternative
Name Percentage	50% R-PET / 50% VIRGIN	R-PET flakes up to 80%
Name Percentage	0%	0%
Name Percentage	0%	0,0%

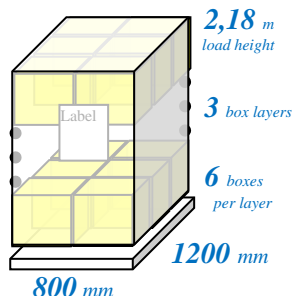
Box inner size:



III. Sheet specification

Parameter	Value	Tolerance
Thickness	1,51 mm	±0,1 mm
Width	720,0 mm	+2/-5 mm
Color*	clear	BWTC
Layers	mono-layer	

Palletizing:



IV. Basic article characteristics

Parameter	Value	Tolerance
Length (or Ø)	95, mm	±0,5 mm
Width (or Ø)	95, mm	±0,5 mm
Height	149,3 mm	±0,5 mm
Stacking distance	9,70 mm	±0,2 mm
Weight	14,5 g	±0,9 g
Capacity nominal / brimful	500 / 630 ml	±17 ml
Reference:	EU630 cup PET 500/630ml (SET B)	

*B – black, W – white, T – transparent, C – any color

Articles in a pile: **50**

Piles in a box: **16**

Articles in a box: **800**

Box inner size: **396x396x660**

Box load gross: **12,39 kg**

Boxes per pallet: **18**

Articles per pallet: **14400**

Pallet height: **2,18 m**

Pallet type: **EURO**

Pallets per truck: **33**

FTL: **475200**

Packaging conditions:

- Wooden pallets, clean, dry
- On pallet top: *film*
- Box liner: **LDPE G380058**
- PÓLREKAW LD 235/0,022 22µ**
- Labels per pallet sides: **2**
- Corner box label: **Yes**
- Customer label: **No**
- Box: **cardboard G300016 - 620730**

V. Microbiology tests

Once a month a comparative microbiology test of factory air is run against external air, with air circling articles examination in material groups (rotating) against internal normative levels. Records are kept for a minimum of three years and their values are available to the buyer.

VI. Delivery & Storage:

Deliveries according to transport regulations, details on the left. Store in dry, clean, shaded areas, away from heat sources, 10-40°C, RH<85%. Articles good to use within a year from production date, if properly stored.


VII. Other

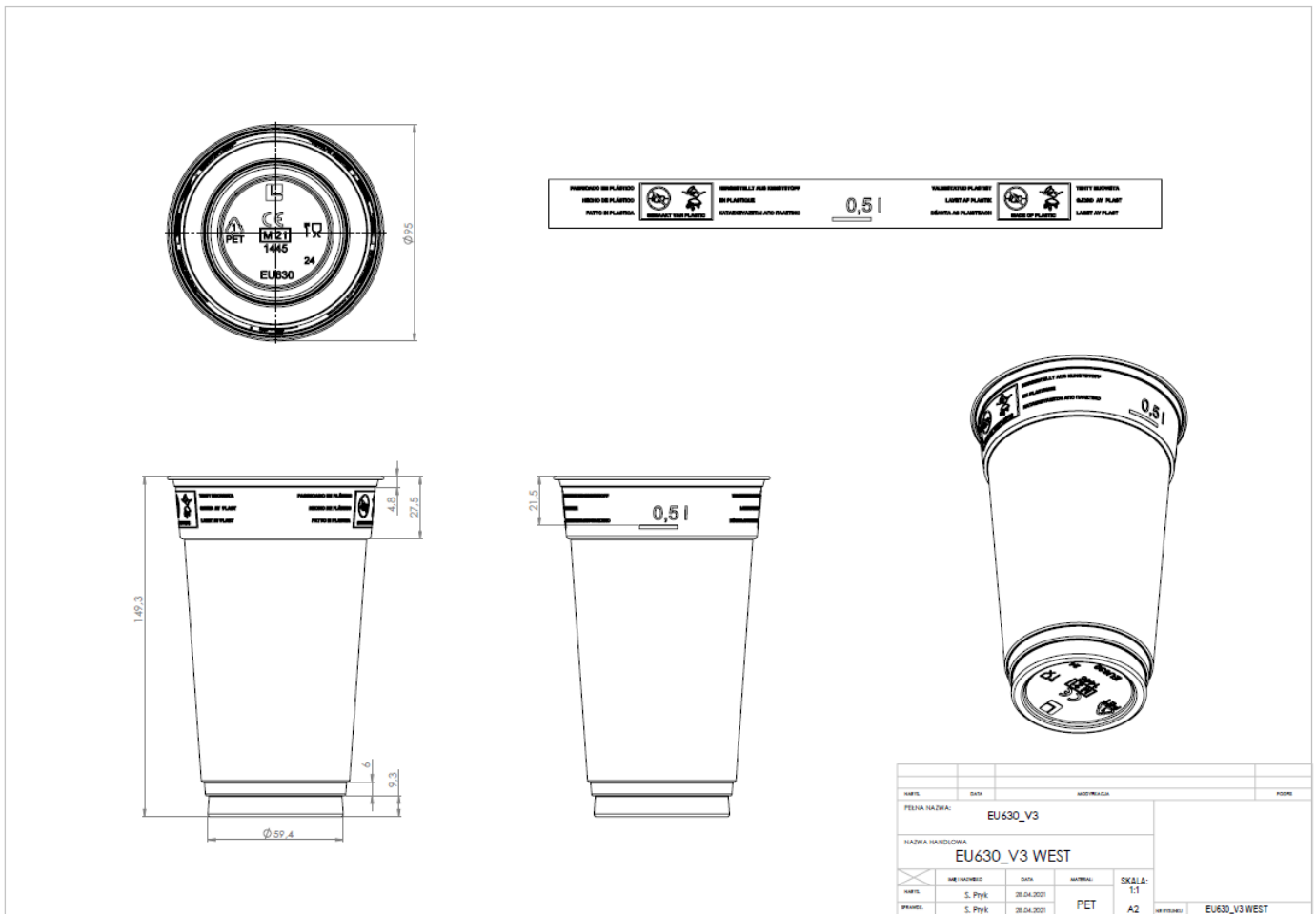
In case of change in article use or processing the recipient is obligated to contact the supplier with pertaining details as soon as possible.

VIII. Signed approval

H&Q Manager	Buyer Representative:	
Monika Mikulska		
Date: 2021.05.26	Date: 2021.05.26	Date:

- Remarks: **No separation between box layers on pallet - Absorption pads: No; weight: n/a - Stacking: A-A - Sleeve label: yes**

	Stadsing A/S Oestre Faelledvej 13 - 9400 Noeresundby	Version 0 Revision A
	Replaces specification no. <i>n/a</i> From: <i>n/a</i> Due to: <i>n/a</i>	Date: 2021.05.26 Page 2 of 2
Code: 27146	Article: clear EU630 cup PET 500/630ml (SET B) Specification no. clear EU630 Ø95xH149,3	UPC: 5907739664167 Food contact: cold beverages
Prepared by: UN		CE mark: Yes
Checked by: Dept. Super.	Production Supervisor: Dept. Super.	
Attachments:	Article drawing: EU630; Nr. Formy # 21730 (20.6)	



WZROST	DATA	MODYFIKACJA	POZIOM
FELNA NAZWA: EU630_V3			
NAZWA HANDLOWA EU630_V3 WEST			
WZROST	DATA	MATERIAŁ	SKALA:
WZROST	S. Półk	20.04.2021	E1
WZROST	S. Półk	20.04.2021	PET A2
			WZROST: EU630_V3 WEST

Własność PACCOR POLSKA, użycie bez pisemnego zezwolenia zabronione.