

# Product leaflet

<b>Product</b>	<b>Model No.</b>	<b>Ordering No.</b>
Powered air purifying respirator	SR 500	H06-0112

## Product Description

The SR 500 is a battery-powered fan that, together with a filter and an approved head top, is included in the Sundström fan-assisted respiratory protective device systems. The SR 500 can be used as an alternative to filter respirators in all situations in which these are recommended. This applies particularly to work that is hard, warm or of long duration.

The human interface may consist of a hood, face shield, half mask or full face mask. The fan is equipped with a filter, and the filtered air is fed through a hose to the human interface. The pressure then generated prevents surrounding pollutants from penetrating into the mask.

### The characteristics of the SR 500 are as follows:

The battery is of lithium-ion type • Two battery alternatives, i.e. STD (Standard 2.2 Ah) and HD (Heavy Duty 3.6 Ah) • The charging time for the Standard battery is around 1.5 hours and for the Heavy Duty battery, about 2 hours • Equipped with two filters/combined filters • Operating time of up to 13 hours • The same control is used for starting, stopping and selection of operating status • Display with symbols • Equipped with automatic air flow control with compensation for air pressure and temperature • Can be used together with hoods SR 520, SR 530, SR 561, SR 562, face shield SR 540, half mask SR 900, full face mask SR 200, welding shield SR 590, helmet with visor SR 580 or welding shield/helmet with visor SR 584/SR 580.

Electronics ingress protection is approved in IP class IP67 according to IEC / EN 60529.

The SR 500 is also available in an explosion-protected version designated the SR 500 EX for use in a potentially explosive atmosphere (ATEX Directive 94/9/EC). See the separate product leaflet.

## Technical specification

	SR 500	EN 12941:1998 + A2:2008	EN12942:1998 + A2:2008
<b>Air flow, min/max</b>	175/240 l/min	≥ 120 l/min	-
<b>STD-battery/HD-Battery</b>	14.8V, 2.2 Ah/3.6 Ah	-	-
<b>Operating times at 175/240 l/min:</b>			
<b>P3, STD-battery</b>	8 h (7 h <sup>3</sup> )/5 h (4 h <sup>3</sup> )	≥ 4 h	≥ 4 h
<b>P3, HD- battery</b>	13 h (12 h <sup>3</sup> )/8 h (7 h <sup>3</sup> )	≥ 4 h	≥ 4 h
<b>Weight with STD-battery and P3 filter</b>	≈ 1 350 g	≤ 3,500 g	≤ 3,500 g
<b>Service conditions</b>	-10 °C to +55 °C, < 90% RH, 600 to 1200 hPa	-	-
<b>Storage conditions</b>	-20 °C to +40 °C, < 90% RH	-	-
<b>Low flow warning level</b>	< 175 l/min	≤ 175 l/min	≤ 175 l/min
<b>Assigned Protection Factor<sup>1</sup>: SR 520, SR 530, SR 540, SR 561/562, SR 580, SR 584, SR 590</b>	40 (TH3)	-	-
<b>Assigned Protection Factor<sup>1</sup> SR 200</b>	40 (TM3)	-	-
<b>Nominal Protection Factor<sup>2</sup> SR 520, SR 530, SR 540, SR 561/562, SR 580, SR 584, SR 590</b>	500 (TH3)	-	-
<b>Nominal Protection Factor<sup>2</sup> SR 200</b>	2000 (TM3)	-	-
<b>Approvals</b>	EN 12941:1998 + A2:2008 EN 12942:1998 + A2:2008	-	-

1) Specified in BS 4275 and applies generally to all approved fan-assisted respiratory protective devices, regardless of the test results.

2) According to EN 529:2005.

3) SR 900 + SR 951/SR 952.



### Head Office

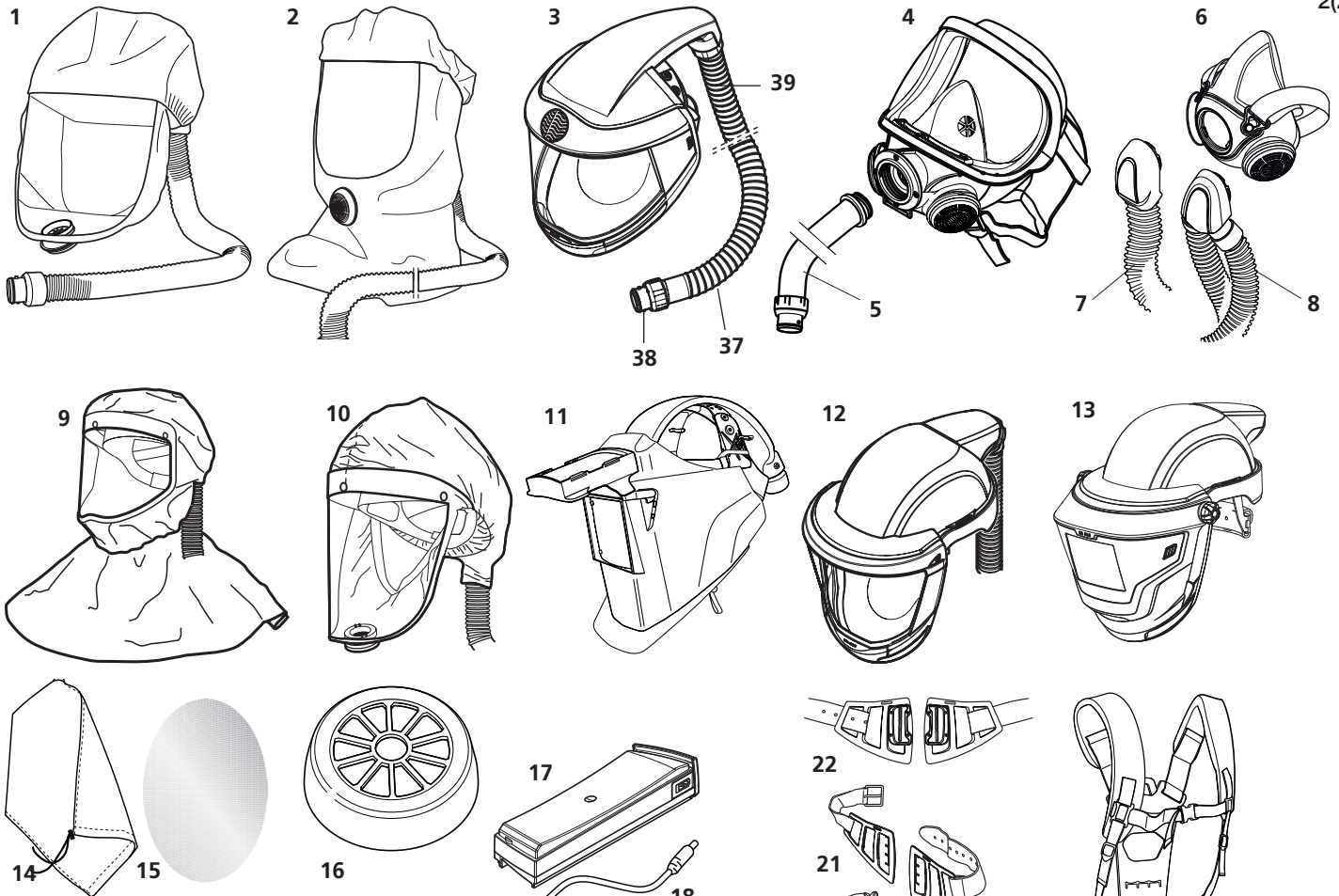
Tel: +46-(0)8-562 370 00  
Fax: +46-(0)8-562 370 20

Visiting address:  
Stockholmsvägen 33  
SE-181 33 Lidingö

### Factory

Tel: +46-(0)8-562 370 00  
Fax: +46-(0)8-562 370 60

Visiting address:  
Västergatan 4  
SE-341 50 Lagan



**Head-tops, spare parts and accessories**

**Item**

**No. Part**

No. Part	Ordering No.
1. Hood SR 520 M/L	H06-0212
1. Hood SR 520 S/M	H06-0312
2. Hood SR 530	H06-0412
3. Face shield SR 540	H06-0512
4. Full face mask SR 200, PC visor	H01-1212
4. Full face mask SR 200, glass visor	H01-1312
5. PU hose SR 550 for SR 200	T01-1216
5. Rubber hose SR 551 for SR 200	T01-1218
6. SR 900 S	H01-3012
6. SR 900 M	H01-3112
6. SR 900 L	H01-3212
7. Hose SR 951	T01-3003
8. Twin hose SR 952	R01-3009
9. Hood SR 561	H06-5012
10. Hood SR 562	H06-5112
11. Welding shield SR 590	H06-4012
12. Helmet with visor SR 580	H06-8012
13. Welding shield/Helmet with visor SR 584/SR 580	H06-8310
14. Flow meter SR 356	R03-0346
15. Steel net disc SR 336	T01-2001
16. Asbestos Kit SR 509	T06-0105
17. Battery SR 501, 2,2 Ah	R06-0108
17. Battery HD SR 502, 3,6 Ah	T06-0101
18. Battery charger SR 513	R06-0103
19. Charging station without chargers SR 506	T06-0108
19. Charging station, complete SR 516	T06-0111
20. Belt SR 508	R06-0101
20. Rubber belt SR 504	T06-0104
21. Leather belt SR 503	T06-0103
22. HD belt SR 553, standard	T06-0119
22. HD belt SR 553, large	T06-0120
23. Harness SR 552	T06-0116
24. Fan SR 500, bare	R06-0110
25. Splash cover SR 514	T06-0114
26. Storage bag SR 505 w two compartments	T06-0102
27. Pre-filter holder SR 512	R06-0106
28. Pre-filter SR 221	H02-0312
29. Particle filter P3 R, SR 510	H02-1312
30. Filter adapter SR 511	R06-0105
31. Pre-filter holder SR 5153 for SR 710	R01-0604
32. Particle filter P3 R, SR 710	H02-1512
33. Gas filter A2, SR 518	H02-7012
34. Gas filter ABE1, SR 515	H02-7112
35. Gas filter A1BE2K1, SR 597	H02-7212
36. Combined filter A1BE2K1-Hg-P3 R, SR 599	H02-7312
37. Hose SR 541 for SR 540	R06-0501
38. O-ring for breathing hose	R06-0202
39. Flat gasket for hose SR 541	R06-0506
40. Gasket for fan	R06-0107
41. Plug kit	R06-0703

